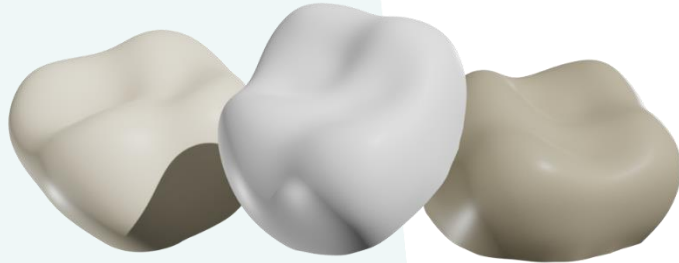


Ultra-Thin personalized PEEK crowns

for caries, MIH-hypomineralized, dentinogenesis imperfecta, and other sensitive cases in teeth

Basic Course

1h – online
FREE



Filipe Samuel Silva

Version 1.0 (2024)

Dental crowns are fundamental for structural teeth protection, chewing function, face biomechanical function, aesthetics, caries management, sensitivity protection, teeth with structural imperfections and other anomalies' protection and restoration, and... much more.

Sponsored by:

www.extremater.com



By:

Filipe Samuel Silva

Full Professor at Minho University, Portugal
Mechanical Engineering Department
PhD in Mechanical Engineering
PORTUGAL



Ranked among the 2% of most influential scientists in the world in biomedical materials and processes (Elsevier, Stanford University, USA) (2021, 2022, 2023, 2024)

Published more than 390 research papers indexed to ISI; 130 in dental field; H index: 45; Citations: > 8250; PI of more than 20 research projects (>10M€); > 25 PhD students (7 dental doctors); 5 World patents; R&D with Research Centers, Universities, Dental Clinics, Companies, from EUA, Brasil, Portugal, Netherlands, Finland, Germany, Belgium, Switzerland, Romania, Turkey, Italy, France, Estonia, Austria, Australia, India, ...; CEO of Extreme Materials-Dental Solutions (www.extremater.com);

[Scopus Author ID: 26029207600](https://scopus.com/authid/detail.uri?authorId=26029207600); orcid.org/0000-0003-3596-3328

Tlm.: +351917560788; Email: Fsamuel@dem.uminho.pt; www.dem.uminho.pt



Universidade do Minho
Escola de Engenharia



Sponsored by:

www.extremater.com



Course details:

- A. Ultra-thin personalized PEEK Crowns- general presentation (**1h- virtual presentation**) – FREE

Comparison of Ultra-Thin personalized PEEK crowns and SS-Stainless Steel crowns. Color, Geometry, Mechanical properties, Elasticity, Flexibility, Wear properties, Fatigue and durability, Biology, Occlusion, Application protocol, Errors to avoid, Intra-oral scan flow, Discussion.

Contact: Filipe Samuel Silva; Email.: Fsamuel@dem.uminho.pt Tlm.: +3519175607